



2025 Annual Report

EXPANDING HORIZONS

25







TABLE OF CONTENTS

| | |
|----|---------------------------|
| 2 | Mission & Vision |
| 3 | President's Letter |
| 4 | About New Horizons |
| 6 | NHF Core Services |
| 7 | Donor-Advised Funds |
| 8 | Impact Investing |
| 11 | Business Interests |
| 13 | Gifting Real Estate |
| 14 | The Legacy Life Breakfast |
| 16 | Global Distributions |
| 18 | Charitable Projects |
| 20 | Financials |
| 24 | NHF Building & Board |

MISSION

WE BRING RESOURCES AND SOLUTIONS TOGETHER FOR WORLD IMPACT.

VISION

INFLUENCING EVERY SPHERE OF SOCIETY IN EVERY NATION BY STEWARDING RESOURCES FOR WORLD IMPACT.

PRESIDENT'S LETTER



Dear Friends,

2025 was an incredible year of advancement for partners of the New Horizons Foundation as we impacted over 140 nations through our 1,042 Charitable Projects, including 80 new projects. We are grateful for the generosity of thousands of donors with hearts for the world. We saw millions of people reached in these nations, more than we ever have in our history. We were blessed with more projects and donors than ever working to bring change for the good to the world. Incredibly, we deployed over \$53,000,000 for charitable needs in 2025! These are all gains for which we rejoice.

And it's just the beginning! We hosted a special breakfast this year to help introduce David Green and Bill High's new book, *The Legacy Life*, at which 400 of the top leaders of international charitable organizations came together in unity to celebrate the contributions of these men's lives of generosity, legacy, and vision they bring to all of us. The impact of this book will inspire thousands of lives! We are continuing to serve those individuals and entities as a result of that time together.

Their vision of a life legacy is what New Horizons is all about. Our blend of charitable instruments for proactive donors is comprehensive. Our top-rated, professional team offers unique services to help individuals with Charitable Trusts, Donor-Advised Funds, Impact Investing, and Charitable Projects. We help facilitate mission trips and other special interest opportunities. We delight in finding a way to help each individual person accomplish his or her charitable plans. It can be done!

Please come visit us at our Center for Global Impact, where we would welcome the opportunity to serve you! Our beautiful facility functions as the hub for all that we do to serve our projects, donors and constituents. Every week, we host groups that have the same heart to advance and expand our vision for intentional impact, welcoming them with open arms.

We are more optimistic than ever to see the impact NHF will bring to a hurting, needy world. We invite you to join us and enter the most rewarding season of your life as we partner together to impact the world!

Dr. Steven Prensner
President/CEO



ABOUT NEW HORIZONS

VALUES

INNOVATION

We find a way to overcome challenges and remove obstacles.

IMPACT

We work to provide maximum positive effect in all spheres of society.

INTEGRITY

We are a trusted partner, serving and stewarding worthy projects with excellence.

AREAS OF IMPACT



HELPING THE
DISADVANTAGED

SPIRITUAL
DEVELOPMENT

ECONOMIC
EMPOWERMENT



BUILDING
COMMUNITY

MEETING BASIC
NEEDS

SUPPORTING
THE FAMILY



HEALTHCARE

EDUCATION

ARTS & MEDIA

DONOR-ADVISED
FUNDS

CHARITABLE
PROJECTS

CHARITABLE
TRUSTS

OUR
CORE
SERVICES

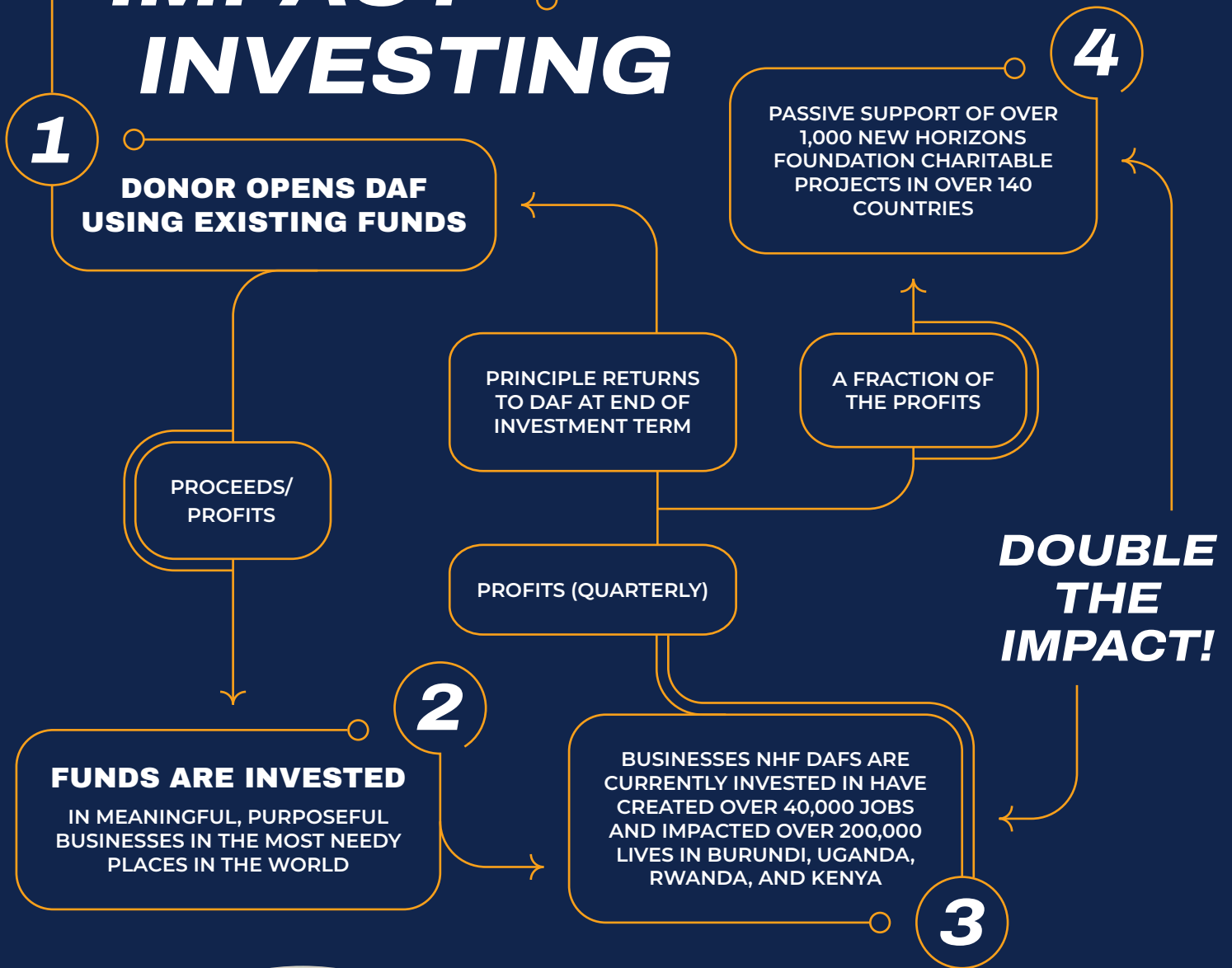


DONOR-ADVISED FUNDS

A Donor-Advised Fund (DAF) is a charitable “checking account” wherein an individual, family, or corporation makes an irrevocable, tax-deductible contribution of personal assets to a charity and at any time thereafter can recommend grant distributions to qualified charitable organizations. A DAF is a great way to help individuals, families, and corporations achieve their desire to take their vision to the world for a charitable impact. A DAF offers the opportunity to create a low cost, convenient, efficient method of charitable giving while maximizing tax advantages. Contributions made to a DAF not only aid current tax planning but provide the

opportunity for additional funding from the estate to ensure your vision for charitable impact is taken to the world for years to come! Every Donor-Advised Fund at New Horizons is making an impact even before the funds are granted. The structure the Foundation has created enables DAFs to support charitable projects that are changing the world. NHF projects are in 50 states and 140 foreign countries helping people by meeting basic needs, helping the disadvantaged, providing healthcare, innovating education, facilitating economic opportunity, encouraging spiritual development, building community, supporting families, and championing the arts.

IMPACT INVESTING



This is where your DAF investment goes to work...

fueling impactful businesses, projects, and communities that create real, measurable good while still generating financial returns. It's a way to align your resources with your deepest convictions, turning every invested dollar into a catalyst for change, hope, and long-term impact.



New Horizons DAFs can have a double impact by investing in values-driven, growth-stage enterprises in emerging markets, targeting companies with \$500K to \$5M in revenue. By focusing on job creation, these investments address the root causes of poverty through rigorous due diligence, innovative investment structuring, and the development of

mentoring relationships based on mutual respect with leaders. This approach not only creates thousands of jobs but also allows these strategic investments to expand transformative reach and sustainably uplift communities, promising long-term economic and social improvements throughout East Africa.

Del Giddings never imagined that his background in contracting and engineering would lead to a rich ministry in Thailand...

but when he befriended Jung Dangshing his worldview expanded. Del began to care for the rural communities of the Golden Triangle as he saw how his unique ability to build infrastructure was also an opportunity to share the gospel with tribal people. Del and Lynne are excited to use their personal contributions through their Donor-Advised Fund to supplement the donations to New Heights Ministry through New Horizons, enabling them to bless these underreached peoples financially, practically, and spiritually.

New Heights Ministry works with the tribal people of the Golden Triangle and Myanmar refugees, including villages such as Kong Khaek where their team built a water tank. The source of the water to Kong Khaek is a mountain spring located fourteen kilometers from the village. Having a constant supply of fresh water for cooking, cleaning, and bathing reduces the infant mortality rate and increases the lifespan of the villagers. Life in these mountain villages is hard and not having to haul water from the nearby river is a huge blessing.



“We are grateful for New Horizons facilitating such a simple process for starting our ministry. It was a thousand times easier than doing it on our own.”

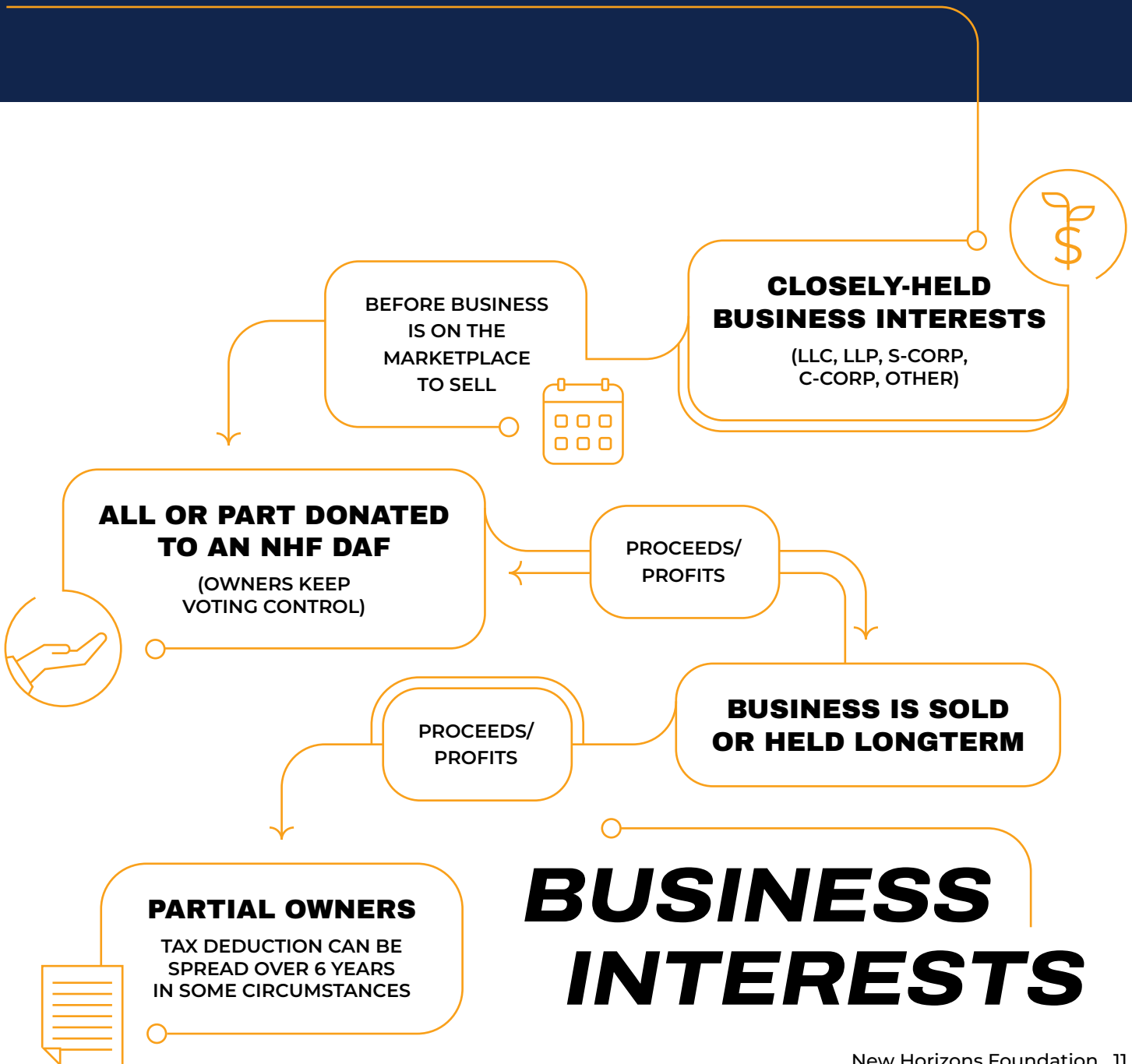
– Del Giddings

Image: Mae La Refugee Camp, where Jung Dangshing leads Bible Training

TRANSFORM YOUR LIFE'S WORK INTO LASTING GOOD

Donate Business Interests and Multiply Your Impact

Donating business interests can fuel impact for generations. Turn a portion of what you've built in LLC units, S-Corp or C-Corp shares, or other closely held interests into meaningful, tax-efficient generosity. Instead of selling first and giving later, you can contribute interest directly to a charitable vehicle, often avoiding capital gains tax and increasing the amount available for impact.



THE OVERCOMER ENDOWMENT DAF

“Far beyond saving on taxes, the Donor-Advised Fund is radically changing lives in ways I never could have dreamed.”

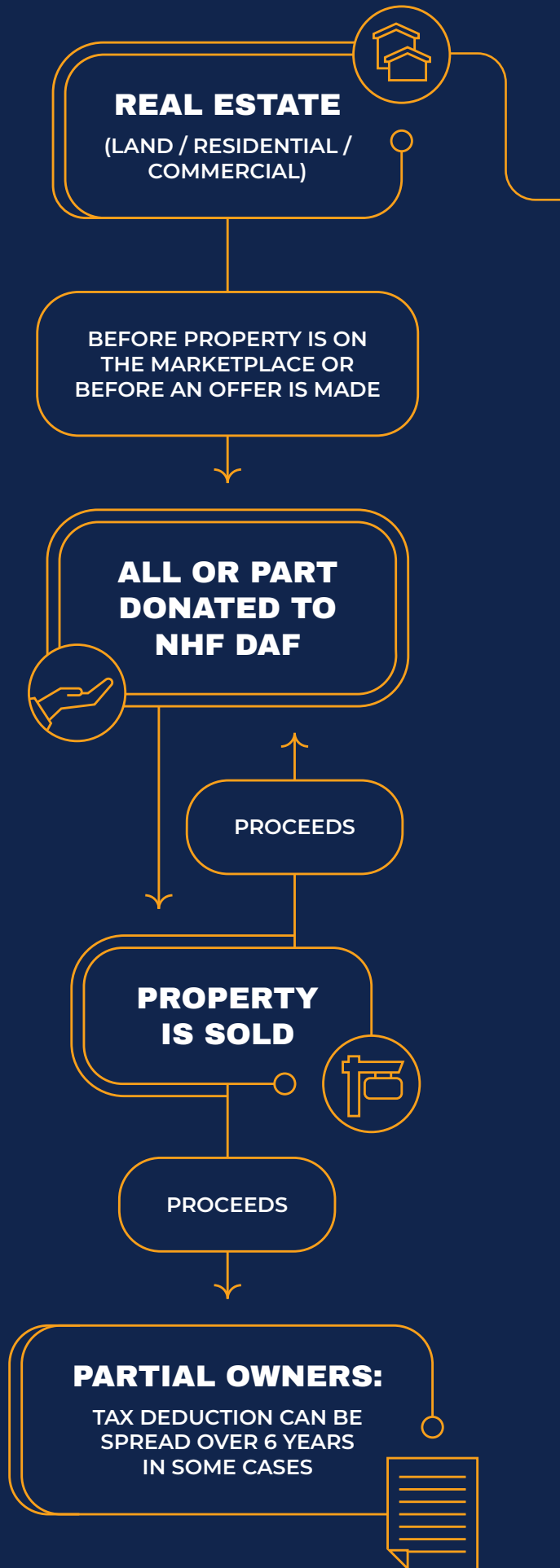
– Jim Ross

The Very Last has been helping impoverished and oppressed children since 2018. While donations to this project have provided for the basic needs of children in extreme need, Jim and his team wanted to do more. They hoped to provide opportunities for children to receive a university education, to equip them to return

to their villages and create grass-roots change from the inside. The Overcomer Endowment DAF was born from that vision. This cooperative Donor-Advised Fund exists to identify and champion exceptional students who would otherwise have no access to higher education. In these underprivileged communities most children never experience any formal education, and less than one eighth of one percent graduate from a university. Through the Overcomer Endowment DAF, the poorest of the poor are not only receiving an education, but are also being disciplined and trained in leadership to create lasting impact in their communities.



GIFTING REAL ESTATE



Tami Bandimere grew up watching her parents give joyfully even when they had very little...

Inspired by their faithfulness through the years, Tami learned that saying, “Yes!” to the opportunities God brings into her life leads to greater fulfillment and a sense of purpose. She has followed in her parents’ footsteps, dedicating her life to investing in her community through education at all levels. “Everybody has a story,” Tami explains; her interest in people led her to start a podcast and continues to motivate her to serve in philanthropic work. As the Bandimere legacy continues through each generation, Tami is leading by example and looking forward to each opportunity to say, “Yes!”



THE LEGACY LIFE BREAKFAST

The Legacy Life Breakfast was one of New Horizons' most meaningful events of 2025. Gathering 400 leaders from organizations, businesses, financial institutions, churches, and media, it served as both a launch for David Green and Bill High's book, *The Legacy Life*, and a larger conversation about what it means to build something that lasts.

The message was clear: the decisions individuals, families, and organizations make today can shape generations to come, and a city that moves with that kind of intentionality can leave a profound mark on its future. Some of the most impactful moments came after the program ended. Leaders from across the region lingered, exchanged ideas, and

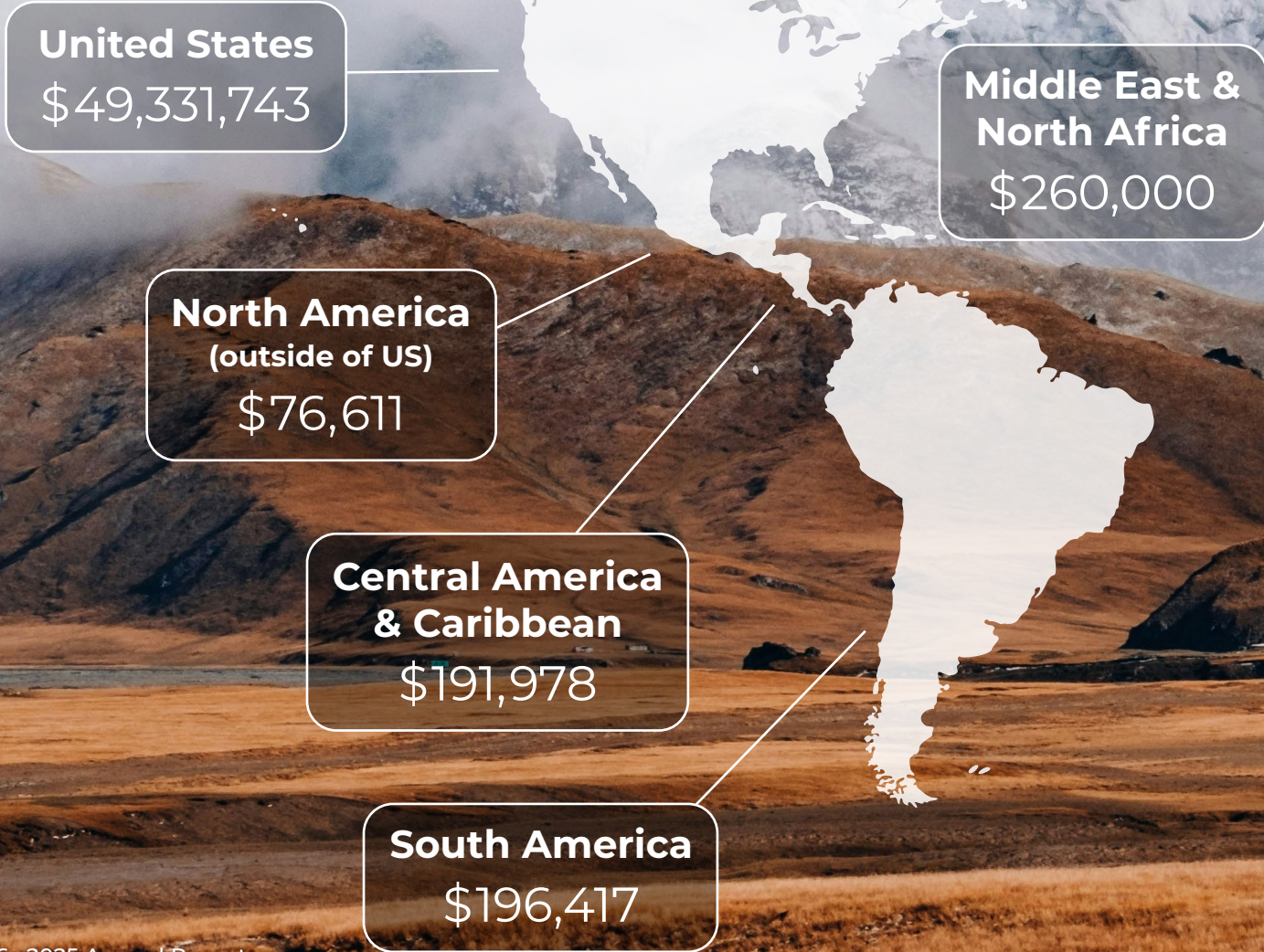
began conversations that would not have happened otherwise. New partnerships took root. The event became a catalyst for exactly the kind of community-minded collaboration that New Horizons exists to support.

For our team, it was also a chance to genuinely connect with new friends and community leaders. Our work in relational wealth and impact planning through DAFs, charitable trusts, impact investing, charitable projects, and a top-rated gift planning team gives us a distinctive ability to walk alongside people as they think through their legacy. We left the Legacy Breakfast energized by the relationships formed and the visions shared, and eager to help turn those visions into something lasting.



GLOBAL IMPACT DISTRIBUTIONS

Charitable Projects & Donor-Advised Funds



**Sum of Charitable
Distributions:**

\$53,059,688

Europe
\$167,450

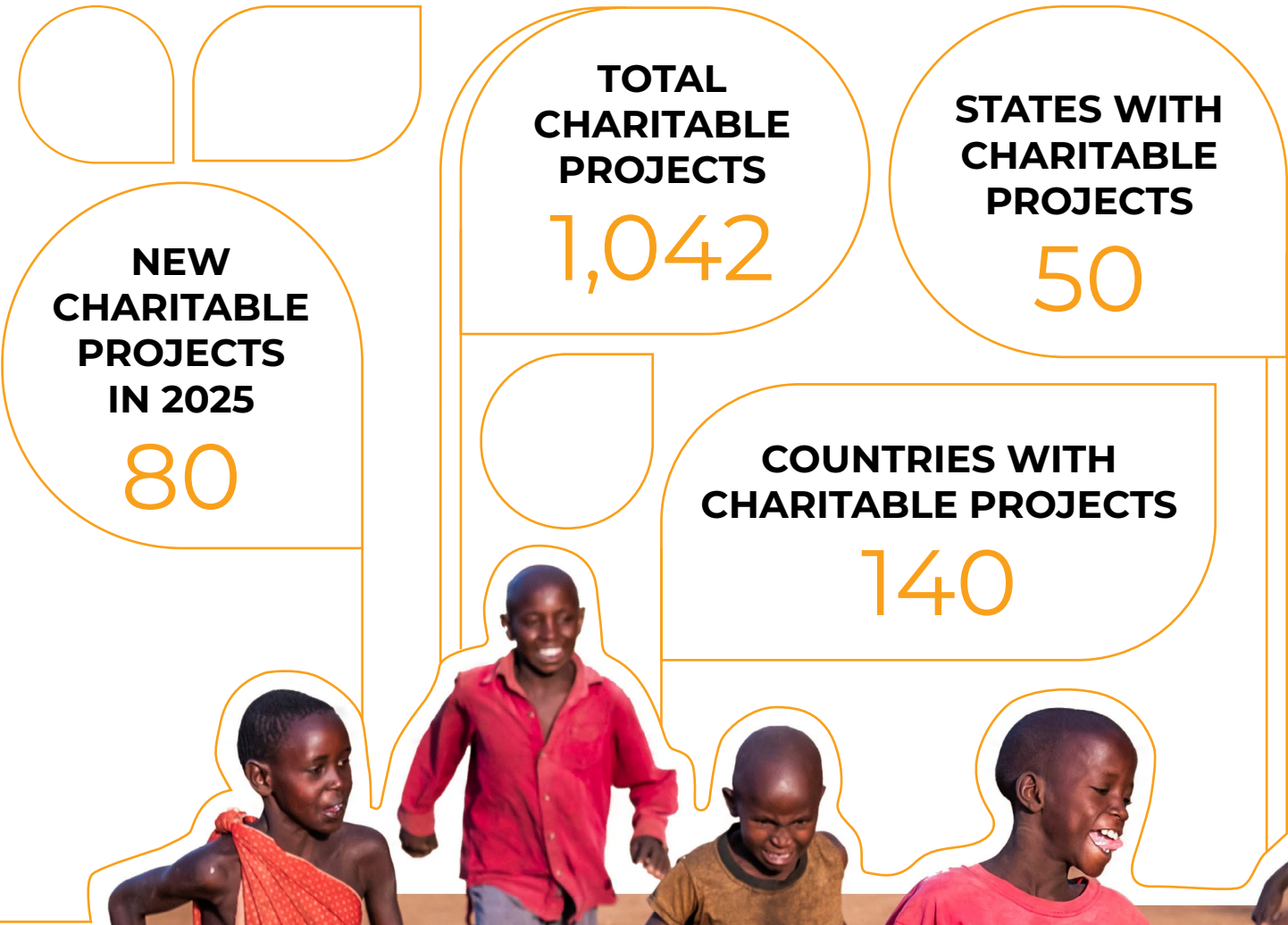
**Russia &
Neighboring States**
\$176,255

East Asia & Pacific
\$1,388,827

South Asia
\$293,227

Sub-Saharan Africa
\$977,180

CHARITABLE PROJECTS AT A GLANCE



**OUTSIDE SERVICES
DISTRIBUTIONS**

\$5,816,338

**FIELD OF INTEREST
DISTRIBUTIONS**

\$29,493

**PROGRAM SUPPORT
DISTRIBUTIONS**

\$31,698,969



FINANCIALS

\$58,908,591

TOTAL OF DONATIONS

67,647

INDIVIDUAL DONATIONS

1,289

GIFTS OVER
\$5,000

740

GIFTS OVER
\$10,000

172

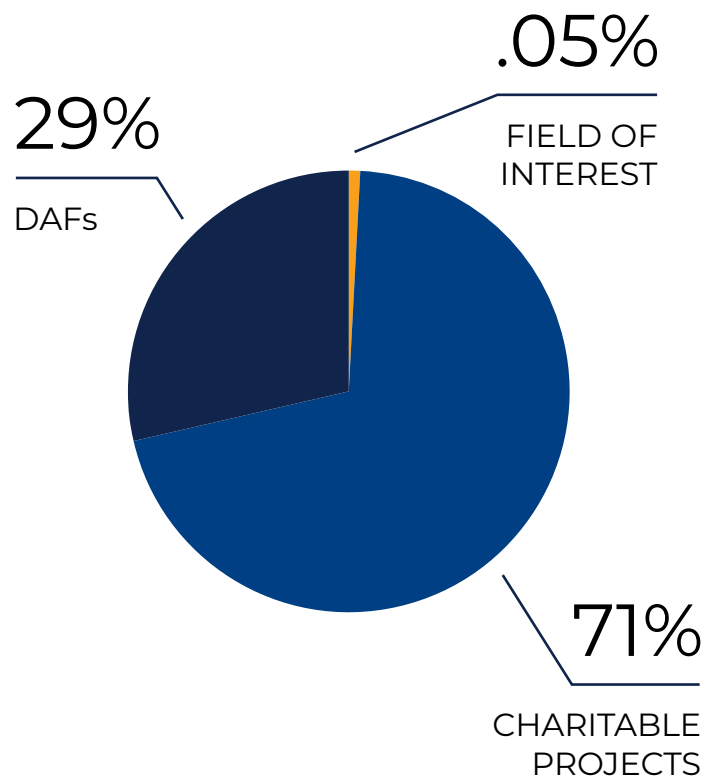
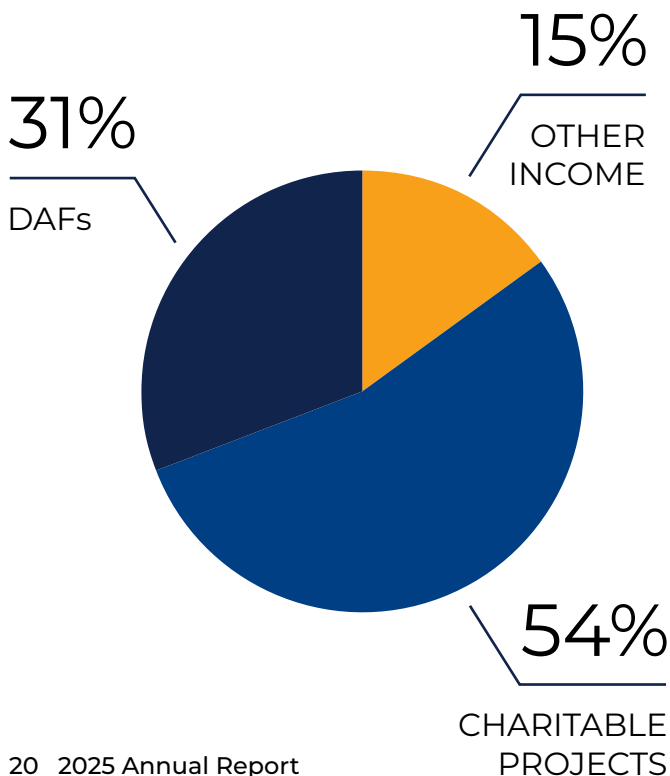
GIFTS OVER
\$50,000

85

GIFTS OVER
\$100,000

CONTRIBUTIONS

DISTRIBUTIONS



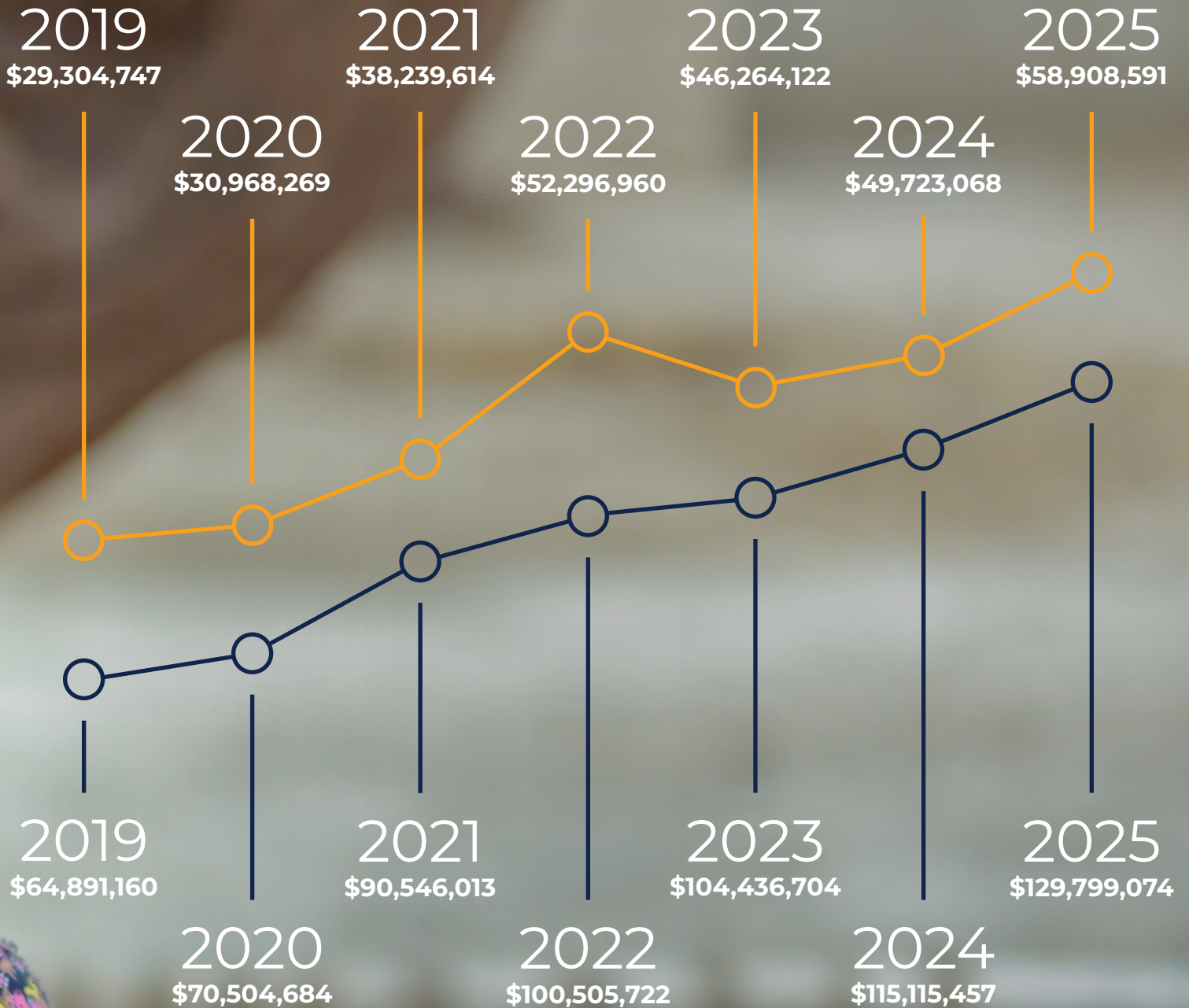
CONSOLIDATED STATEMENT OF ACTIVITIES

| | |
|---|----------------------|
| CONTRIBUTIONS | |
| Donor-Advised Fund Contributions | \$21,142,970 |
| Charitable Project Contributions | \$37,765,621 |
| Total Contributions | \$58,908,591 |
| Other Income | \$10,691,249 |
| Total | \$69,599,840 |
| CHARITABLE SUPPORT DISTRIBUTIONS | |
| Donor-Advised Fund Distributions | \$15,514,888 |
| Charitable Project Distributions | \$37,515,307 |
| Field of Interest Distributions | \$29,493 |
| Total Distributions | \$53,059,688 |
| Net Increase in Donor-Advised Funds and Charitable Projects | \$13,467,464 |
| TOTAL NET ASSETS | \$129,799,074 |
| TOTAL NET LIABILITIES AND DEBT | \$0 |

*All financial information is unaudited and subject to change.



CONTRIBUTIONS



ASSETS

OUR BOARD

Leisle Chung

Gary Daniel

Treasurer

Eric Danos

Dave Gresham

Ron Halverson

Kirk Humphreys

Vice Chairman

Todd Jensen

Gail Jones

Lauren Libby

Chairman

Mutua Mahiaini

Steve Prensner

President / CEO

Barbara Tompkins

Jerry White



CENTER FOR GLOBAL IMPACT

675 VISITORS

32 EVENTS

IZONS
ATION





THE **NEW HORIZONS**
FOUNDATION INC.
PARTNERING TOGETHER FOR WORLD IMPACT

731 Chapel Hills Drive
Colorado Springs, CO 80920
(719) 260-1213 (800) 531-4075
newhorizonsfoundation.com